



What's New on the MDOT Truckers Web Page

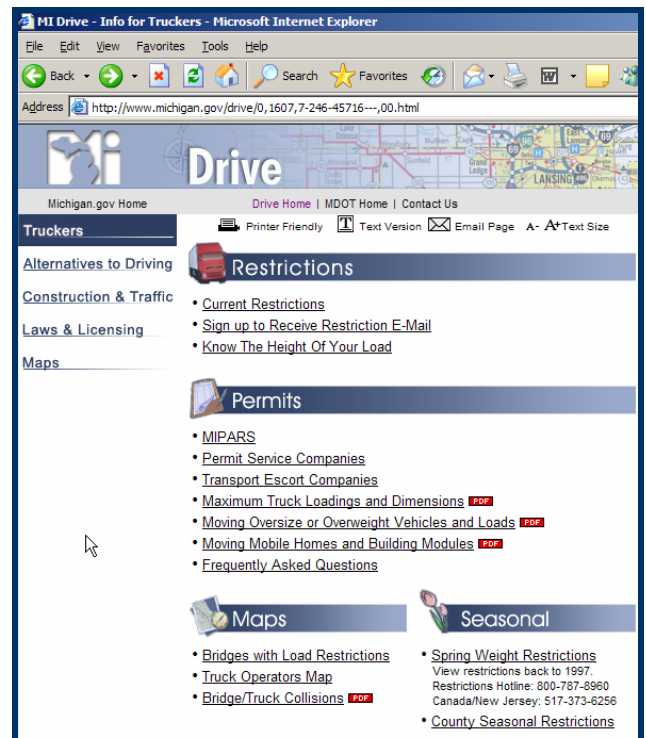
It is MDOT's goal to protect the motoring public and all highway properties. It is through this endeavor that we are continually developing tools to assist and educate our permitting public as they travel on our state trunklines. Our most recent project has been updating the Truckers Web page. The web page is a site of interest to truckers and/or trucking companies and is particularly valuable for companies involved in transport of oversize or overweight vehicles or loads.

Features of the Truckers Web Page include but are not limited to:

- Current Restrictions - A spread sheet listing of temporary restrictions that may effect oversize or overweight (OSOW) transport.
- Sign up to Receive Restriction E-Mail - A simple way to register to be alerted to newly posted temporary restrictions.
- Permit Service Companies - Companies that will acquire OSOW permits for you for a fee.
- Transport Escort Companies - Companies that specialize in providing pilot car services for OSOW vehicles or loads.
- Bridges with Load Restrictions - Maps that give individual overload classification of bridges. This information is particularly important to those who transport vehicles or loads that require overweight permits.
- Truck Operators Map - An online map which shows a number of items that may be important for truckers - including seasonally restricted routes and bridges with vertical clearance less than 14 feet.
- Spring Weight Restrictions - This link provides up to date notifications of messages regarding when spring weight restrictions are imposed and lifted.

The most exciting new addition to the Truckers Web Page is the Detroit Traffic Map. This can be viewed by clicking on the "Construction & Traffic" link in the upper left hand column of the Truckers Web Page; once at that site, click on Detroit Traffic Map. This site

shows a color coded view of the Metro Detroit highways. The colors indicate the speed at which traffic is moving. This provides real time congestion information that may be useful to dispatchers or drivers. In addition, the site also allows you to click on cameras which provide a real time view of the traffic in that area. This is also planned for the Grand Rapids Metro area in the near future.



For more information please check out the Truckers Web Page at www.michigan.gov/truckers.

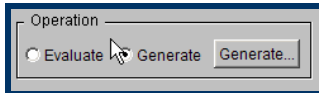
Holiday Restrictions & Office Closings

01-01-08	No Travel	Office Closed
01-02-08	Mobile Homes after noon all others at daybreak	Office Open
01-21-08	No Restrictions	Office Closed
02-18-08	No Restrictions	Office Closed

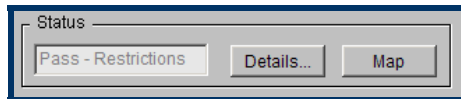
Generate vs. Evaluate Creating a Drivable Route in MIPARS

Permit applicants of the MIPARS program are offered two options when developing a route for their oversize/overweight loads on Michigan's State trunklines; "generate" and "evaluate". Both options can successfully provide the permit applicant a valid route for their load; however they must be used properly.

Generating a Route: Permit applicants can choose the "Generate Route" in the MIPARS program when applying for single trip permits and enjoy the simplicity of having the program recommend a route for them. A permit applicant must only fill out the following information in the route screen:



1. Select the Generate Option in the Operation Box.
Note: the button on the right changes to "Generate".
2. Enter Start and End Locations.
3. Press the Generate Button under the Operation Box.

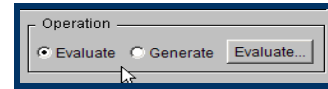


4. Verify the route has passed or passed with restrictions in the Status Box and that the route is acceptable for use.
5. Submit the application.

However, the program doesn't always generate the most direct route. It is important for the applicant to carefully review the generated route and determine if it is acceptable for use. This is mainly due to the fact that the program can only choose from state routes. If a city or county route is needed, the evaluate mode must be used. It may be possible to significantly reduce the route length by choosing the entire route and evaluating as described below. It is also important to point out that the program does not check for vertical clearance. It is therefore critical for the applicant to ensure the vertical clearance is adequate for over height loads.

Evaluating a Route: The "Evaluate Route" option can be used when the permit applicant wishes to specify particular routes for their trip or must go "off system" and travel portions of their trip on county or city roads.

A permit applicant must fill out the following information in the route screen:



1. Select the Evaluate Option in the Operation Box.
Note: the button changes to "Evaluate".
2. Enter Start, all necessary Vias, Off System points if applicable, and End Locations.
3. Press the Evaluate Button in the Operation Box.
4. Verify that the route indicates pass in the Status Box.
5. Submit the application.

The evaluate route option also allows permit applicants to check "partial routes" by simply pressing the evaluate button after every via is entered to determine any potential restrictions.

Whether a generated or evaluated route has been created MIPARS will remind the applicant that we do not verify vertical clearance and ask the applicant if they are sure they want to submit the application. All approved permit fees will be charged to the applicants account.

Getting On-line With a MIPARS

The Michigan Permit and Routing System (MIPARS) allows you to apply for oversize/overweight commercial vehicle permits and check permit application status. Current users of MIPARS can access the program on-line with a user id and password, however if you are interested in obtaining an account to use the MIPARS program you must meet the following requirements:

- Obtain a minimum of 8 permits per month.
- Have internet explorer 5.5 or above.
- Have Java software.
- Attend an onsite MIPARS Training session.

If you can meet these requirements please call the MDOT Permit Office at 517-373-2121 to register for training.

Schedule for MIPARS Onsite Training Sessions

Monday, January 7, 2008
Monday, February 4, 2008
Monday, March 3, 2008